

Jewellery Shop  
Jewellery Shop



*Digital design and personalization of jewellery*

Roland DG has various tools for the digital design and personalization of jewellery in its range. For the digital design on the one hand, we offer especially for the jewellery market developed modelling machines.

With these machines, it's easy to produce detailed wax models for all sorts of jewellery. For the personalization of jewellery on the other hand, we offer engraving machines and metal printers. Personalizing jewellery, gifts and accessories with a text, a drawing or a logo becomes a pleasant and profitable job thanks to these machines.



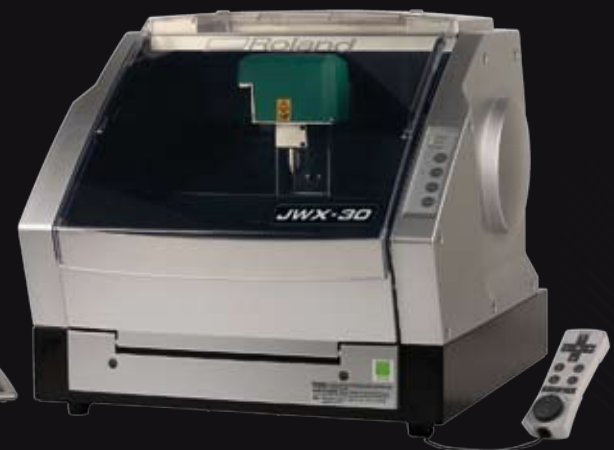
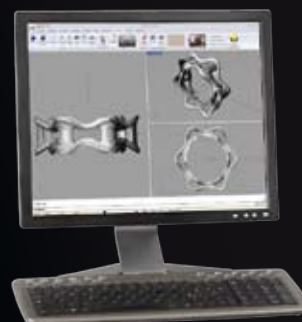
Imagine. Design. Create.

The JWX machines offer jewellery designers a fast and easy solution for the production of wax models. With these modelling machines, you can produce wax masters for rings, pendants, bracelets, brooches, earrings and cuff links. A huge advantage of the JWX is the fact that you can devote more time to the creative work. Moreover, the JWX cuts the models in great detail. Accuracy and reliability are the keywords.

The JWX-30 is delivered with Roland JewelStudio software. This software package has been developed specifically for jewellery designers and goldsmiths. With JewelStudio you can digitize your hand drawn sketches or create original digital designs in a quick and intuitive way by following simple step-by-step instructions. Moreover, you can tilt and rotate the on-screen model as if you are holding a real model in your hands. This way, designers can review every aspect of their design and present it to their client. This makes it possible to modify and finalize designs together with clients.



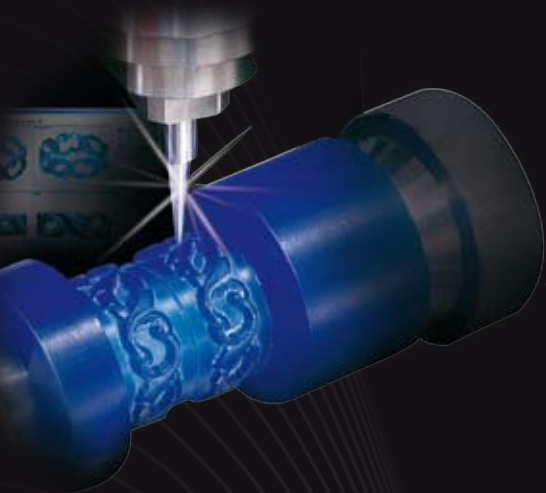
**JWX-30**



# JEWELA

DESKTOP ENGRAVER JWX-10

## JWX-10



## A lasting impact

With the MPX-80, you “print” texts, images, logos and illustrations on a broad range of objects including souvenirs, name tags, pendants and charms. Compatible materials are platinum, gold, silver, brass, stainless steel and acrylic. The metal printer works accurately and doesn’t remove material, which makes it ideal for the personalization of precious metals.

The MPX-80 is delivered with METAZAstudio software. This design software imports JPEG, BMP, AI and EPS files. You can also use data of digital cameras or compatible scanners. The software allows adding texts and borders, removing the background of photos and rotating texts and images.



## METAZA

MPX-80 PHOTO IMPACT PRINTER

## Personalized = Exclusive



With the EGX-360 Rotary Gift Engraver, you can give a personal touch to all sorts of gifts. Jewellers can use the EGX-360 for inside and outside ring engraving. Other applications are engraving watches, clocks, flasks, jewel cases and more. Glass engraving is another interesting possibility. The EGX-360 is professionally built, versatile and easy-to-use. The machine is delivered with user-friendly software that features a range of creative tools, like V-Carving (which creates hand carved effects). Roland Engrave Studio also features a preview function that reduces errors, saves time and materials.



## EGX-360





## » Specifications

	JWX-30	JWX-10	EGX-360	MPX-80
<b>Material</b>	Modelling wax	Modelling wax	Gold, silver, stainless steel, brass, aluminium, plastics, wood, glass	Gold, silver, stainless steel, brass, aluminium
<b>Material dimensions</b>	Maximal 305 (X-axis) x 205 (Y-axis) x 100 (Z-axis) mm	Maximal 140 (X-axis) x 105 (Y-axis) x 105 (Z-axis) mm	Maximal 305 (X-axis) x 230 (Y-axis) x 40 (Z-axis) mm	Maximal 100 (X-axis) x 100 (Y-axis) x 100 (Z-axis) mm
<b>Software resolution</b>	0.01 mm/pass	0.01 mm/pass	0.01 of 0.025 mm/pass	
<b>Mechanical resolution</b>	0,00125 mm/pass (X, Y, Z-axis); 0,0028125° (A-axis)	0,002 mm/pass (X,Y, Z-axis); 0,0225° (A-axis)	0,0025 mm/pass (X, Y-axis); 0,00125 mm/pass (Z-axis); 0,045° (A-axis)	1058 dpi (vector); 529 dpi (raster)
<b>Combined software</b>	JewelStudio, SRP Player	Modela Player4, Virtual Modela	EngraveStudio, Dr. Engrave, 3D Engrave, Virtual Modela	METAZASstudio

Roland DG products that feature this environmental label meet the company's criteria for environmental consciousness, a set of standards based on ISO 14021 self-declaration type II. For more information, please visit [www.rolanddg.com](http://www.rolanddg.com).



### ISO 14001:2004 and ISO 9001:2000 Certified

Roland pursues both environmental protection and continuous quality improvement. Under the philosophy of preserving the environment and human health, Roland is actively working to abolish organic solvents in production, to reduce and recycle waste, to reduce power use, and to purchase recycled products. Roland constantly strives to provide the most highly reliable products available.



Roland reserves the right to make changes in specifications, materials or accessories without notice. Your actual output may vary. For optimum output quality, periodic maintenance to critical components may be required. Please contact your Roland dealer for details. No guarantee or warranty is implied other than expressly stated. Roland shall not be liable for any incidental or consequential damages, whether foreseeable or not, caused by defects in such products. All trademarks are the property of their respective owners.

 **Roland**<sup>®</sup>

**AUTHORIZED DEALER:**

[www.rolanddg.eu](http://www.rolanddg.eu)